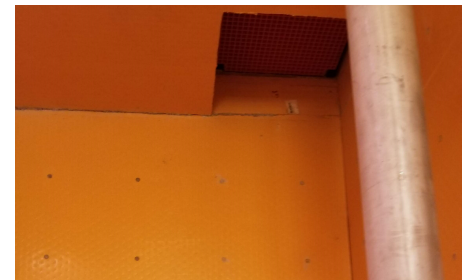




# CASE STUDY

## Landfill Pumping Station

- ▼ **LOCATION:** Waterloo, Ontario
- ▼ **PROJECT TYPE:** Supply and installation
- ▼ **PRODUCT USED:** Concrete Protective Liner

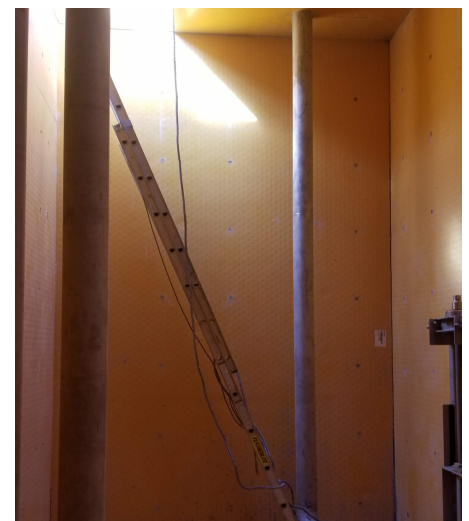


Concrete protective liner on the inside of tank wall and roof

- ▼ **PROBLEM:**  
Landfill pumping stations collect leachate emitted by the landfill. Here these gases are then extracted, and sent off site to generate electricity. Over time, the concrete will erode as a result of corrosiveness of the leachate gases flowing through, and would need to be completely replaced. The client needed a solution to prevent premature replacement.

- ▼ **THE TITAN SOLUTION:**

Titan supplied concrete protective liner to be installed in the pumping station facility. This solution works to extend the life of the concrete in the pumping station. We pre-fabricated the liner panels and worked with the general contractor to install them into the formwork, walls, floors and ceilings. After they were installed, we came in and welded the joints. This was a superior solution than spray applied coating.



Concrete protective liner on the inside of tank wall

- ▼ **ACHIEVEMENT:**

We worked extensively with the client, and completed the job successfully. The customer was very pleased with the solution and Titan's quality of work.

Contact us for more information:

**TITAN ENVIRONMENTAL CONTAINMENT**

Toll free: 1-866-327-1957 | Email: [info@titanenviro.com](mailto:info@titanenviro.com) | Web [www.titanenviro.com](http://www.titanenviro.com)

TRUST.QUALITY.VALUE